



MITAKA CITY NEWS



March 1, 2009 No. 112

Published monthly by:
Mitaka Municipal Office, Tokyo
Edited by:
Secretariat and Public Relations Section
Mitaka Municipal Office
1-1, Nozaki 1-chome, Mitaka, Tokyo
181-8555
Phone: 0422-45-1151
URL: <http://www.city.mitaka.tokyo.jp/english/index.html>

In a commemorative event showing a precious cultural property of traditional Mitaka life, the Old Waterwheel Farmhouse of Nogawa Basin, Musashino reaches its 200th anniversary

The waterwheel in Mitaka city's Osawa is not currently running, but it has been designated a part of the Tokyo Metropolitan area's tangible and traditional cultural properties, and with the help of local volunteers offering guided tours it has been opened to the public, and represents a precious cultural asset. Since this waterwheel's construction, almost 200 years have passed. There is to be a commemorative ceremony in the city, and a special opportunity for the public to see the workings of the Old Waterwheel Farmhouse. Please come along and see the charms of one of Musashino's treasures, at Nogawa Basin.

Inquiries: Lifelong Learning Promotion Section Ext. 3316

200-year commemorative service

Time and Date: March 21 (Sat), from 14:00

Venue: Musashino (Nogawa Basin)'s Old Waterwheel Farmhouse, Osawa 6-10-15

Activities: The waterwheel in action, a performance from a Japanese traditional orchestra, and more.

The open especially to the public

Time and date: March 21 (Sat) to 28 (Sat) 12:00-16:00

Venue: Musashino (Nogawa Basin)'s Old Waterwheel Farmhouse

Activities: On the opening day, there will be an origami class, a kaleidoscope making class, nighttime opening and storytelling (March 21 (Sat) only), an area to try traditional Japanese games, and more.

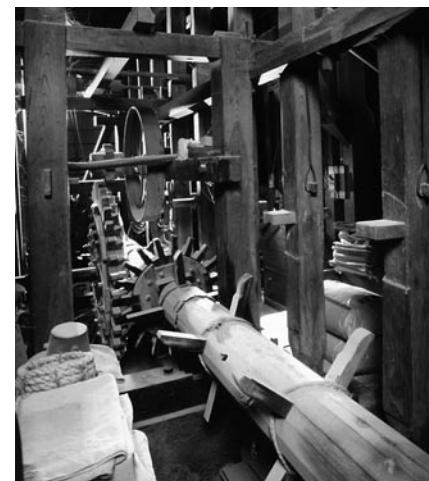


Waterwheel exhibition

Date and Time: March 23 (Mon) to 31 (Tue) (closed on weekends and national holidays) 9:00-17:00

Venue: Mitaka City Hall, 1st Floor Lobby

Activities: An exhibition of the 200-year history of the waterwheel and display introducing the mechanism of the waterwheel and other items.



Information

Information about Mitaka International Society for Hospitality

MISHOP Office

Days: Monday through Saturday (Closed on Sundays and national holidays)

Hours: 9:30 a.m. to 5:15 p.m.

Location: Mitaka City Chuo-Dori Town Plaza 4F, 30-12, Shimorenjaku 3-chome

Tel: 0422-43-7812 **Fax:** 0422-43-9966

E-mail: mishop@parkcity.ne.jp

URL: http://www1.parkcity.ne.jp/mishop/english/index_e.html



Towards World Peace

▶ Please come and support our silent prayer

In the Great Tokyo Air Raid of March 10th 1945, 100,000 precious lives were lost. In a pledge never to fight another war, the anniversary of this day was established as "Tokyo Metropolitan Peace Day". There will be mourning for people lost through war, and prayers for worldwide lasting peace. On the 10th of March (Tue) at 13:00, there will be an alarm sounded from the disaster prevention station to signal a minute's silence, in which we hope you will join us.

▶ Mitaka Peace Film Festival

On the 10th March (Tue), to commemorate 'Tokyo Metropolitan Peace Day', we will be holding the 'Mitaka Peace Film Festival'. Please come along to watch the films, and reflect on the importance of peace.

Date and Time: March 20 (Holiday) 12:30 to 18:32 (Doors open at 12:00 noon)

Venue: Mitaka City Public Hall free entry

Screenings:

'Maya no Issho'

Japan/1996/Director: Kouyama Seijiro/
Original text: Muku Hatoju/75 min. Animation
12:30 to 13:45

'Blood Diamond'

USA/2007/
Director: Edward Zwick/
Starring: Leonardo Di Caprio/143 min.
14:15 to 16:38

'The Band's Visit'

Israel/France/2007/
Director: Eran Kolirin/87 min.
17:05 to 18:32

Inquiries: Planning Management Section
Ext. 2116



Spring is the Season for Moving House



Here are some key points to remember when planning your move:

1. Moving-in notification Change of address notification Moving-out notification

Type of notification	Notification period	Necessary documents
Moving-in notification Change of address	Please notify us within 14 days of moving into a new house, or changing residence in Mitaka city.	CERTIFICATE OF ALIEN REGISTRATION
Moving-out	Within 14 days of arriving, please carry out the necessary procedure in the municipality into which you move.	

Inquiries: Citizen's General Affairs Department
Alien Registration Ext.2322

2. National Pension Notification

People already signed up for the National Pensions scheme, if there has been any change to your alien registration certificate, please carry out the necessary steps to update your National Pension.

Necessary Documents: Alien Registration Certificate, Pension Book

Inquiries: Citizen's General Affairs Department National Pension Subsection Ext.2394

3. Water Supply Connection and Stoppage

When moving into or out of a house, please contact us 3-4 days before the move.

Inquiries: Tama Customer Center Tel: 0570-091100

*from PHS, IP phone : 042-548-5100

4. Dealing with Bulky Garbage and Large Quantities of Garbage

When moving into or out of a house, please inform us of any extra garbage you may have.

Inquiries: Mitaka City Bulky Garbage Center Tel: 03-5715-1212

5. National Health Insurance Notification

Type of notification	Notification period	Necessary documents
Moving-in	Please carry out the necessary procedure within 14 days.	Alien registration Certificate, Passport
Moving-out		Health Insurance Card

*If you are moving abroad, please inform us in advance

Inquiries: Insurance and National Pension Division, National Health Insurance Subsection Ext. 2383

Please try our Self-Service Certificate Issuing Machine

[What the machine can issue] Certification of information recorded on your foreign resident registration file, seal registration certification

In order to use the self-service certificate issuing machine, you will need a PIN-protected 'Seal Registration Citizen's Card' or a 'Citizens' Card'. The municipal office citizens division is at the 7th window, please apply at any local government window. Please apply for this at the municipal office, civic affairs section, counter 7 or each municipal office. (Seal registration reception counter is only at the municipal office, or at the municipal office branch in front of Mitaka station)

Installation Features	Usage Times
Municipal office branch in front of Mitaka station (2 minutes on foot from the South Exit of Mitaka station) (Shimorenjaku 3-24-3 Mitaka Station Citizens Cooperation Building, 2nd floor)	8:30 am to 21:00 pm *Unavailable December 29 2009 to January 3 2010
Mitaka Municipal Office (next to Front entrance) (Nozaki 1-1-1)	
Mitakadai Municipal office counter (3 minutes on foot from the South Exit of Mitakadai station) (Inokashira 2-13-2)	

Population (As of February 1, 2009)

Population: 175,806 persons
The number of Foreign Registrants: 3,171 persons

Events of Mitaka City Arts Foundation

Ticket center Tel.47-5122 Business hours 10:00~19:00 The center is closed on Mondays. (open on national holidays and closed on Tuesday and Wednesday instead)

www http://mitaka-art.jp/ticket (Japanese only) ☎ = A nursery service is available. Please apply at least two weeks before the scheduled date of each performance.

Concert Hall "Kaze"

Mitaka Junior Orchestra (MJO) 7th Spring Concert ☎

March 29 (Sun) From 14:00

For children over 4 years old

No reserved seats, Free entry

*In the interests of safety, pre-school children are requested not to sit on the front bench of

the front row on the 2nd floor, or in the balcony seats.

Conductor: Kaaru Naito

Program: Beethoven Symphony No.5 in C minor

Other pieces to be confirmed

☎ This year we are happy to celebrate the 10th anniversary of the orchestra.

We are also looking forward to hearing some chamber music played by volunteers from the orchestra.



MJO Spring recruitment

MJO is accepting applications for membership. For details, please contact the MJO representative at the Mitaka City Arts Foundation on 0422-47-5122. The guidelines of applicants are also published on the homepage. <http://mitaka.jp/mjo>



This performance is backed by a grant from 'Keirin public funds'

This is a JKA inc. Keirin grant-aided project.

<http://keirin.jp>

<http://ringring-keirin.jp>

Concert Hall "Kaze"

Yukio Yokoyama Chopin Project vol. 4 ☎

April 25 (Sat) From 17:00

Tickets now on sale

All reserved seats.

Members 3,500 yen/Adults 4,000 yen/ Students 2,000 yen

Program: 24 Preludes op. 28, Impromptu, Nocturne op. 32, others pieces to be confirmed

☎ Yukio Yokoyama, originally from Mitaka, was a prizewinner at the international Chopin competition in 1990, at the age of 19. He follows in the footsteps of Chopin, the 'piano poet.'



Don't forget your tax declaration!

2009 Declaration of municipal and metropolitan tax

Until March 16 (Mon)

Inquiries: Municipal Tax Section Ext. 2342

2008 Final Declarations

• Income Tax/Donation Tax - until March 16 (Mon)

• Self-employed traders' consumption tax - until March 31 (Tue)

Inquiries: Private Taxation Department, Musashino Tax Office
Tel: 53-1311 (Switchboard)

Information Service for Foreign Residents

Time: Every 2nd Friday each month from 1:00 to 4:00 p.m (the service counter is open until 3:00). Closed on National Holidays.

Place: Mitaka Municipal Office, 2F Consultation/Information Center

Tel: 0422-44-6600

外国人諮詢

時間: 毎月第4週星期五
下午一点至四点
(打电话或亲自前来都可以
諮詢預約至三點為止。
地点: 諮詢情報中心(市政府2樓)
電話: 0422-44-6600

外国人相談窓口

英語: 毎月第2金曜日
中国語: 毎月第4金曜日
時間: いずれも祝日を除く午後1時~4時
(受付は3時まで)
場所: 市役所2階相談・情報センター
電話: 0422-44-6600