



MITAKA CITY NEWS



July 1, 2009 No. 116

Published monthly by:

Mitaka Municipal Office, Tokyo

Edited by:

Secretariat and Public Relations Section
Mitaka Municipal Office
1-1, Nozaki 1-chome, Mitaka, Tokyo
181-8555

Phone: 0422-45-1151

URL: <http://www.city.mitaka.tokyo.jp/english/index.html>

A happy life for you and your dog

Calling for dog registration and vaccination

Japanese law states that all dogs over 91 days of age in Japan must be registered with the appropriate authorities and have a rabies vaccination once a year. We request that you register your dog and have it vaccinated for rabies for the safety and peace of mind of all Mitaka residents. We hope you will make every effort to abide by the rules about keeping dogs in Mitaka, and be mindful of dog owners' etiquette.

Inquiries: Environmental Protection Section Ext 2523

Registration

Registrations can be made at the Civil Affairs Section on the first floor of the Mitaka Civic Center or at any branch office. Please fill out a registration application form to receive a dog license.

Handling fee: 3,000 Yen (per dog)

Rabies vaccination

Please have your dog vaccinated against rabies at an animal hospital. The cost for the vaccination differs by hospital. Please take the Rabies Vaccination Certificate issued at the hospital to the Civil Affairs Section on the first floor of the Mitaka Civic Center or any branch office to obtain a Rabies Vaccination Slip and tag.

Handling fee: 550 Yen

<Group vaccination>

You can vaccinate your dog against rabies and receive a Rabies Vaccination Slip and tag at a group vaccination held every year in May.

Vaccination: 3,000 Yen, **Rabies Vaccination Slip and tag:** 550 Yen

[Taking dogs abroad]

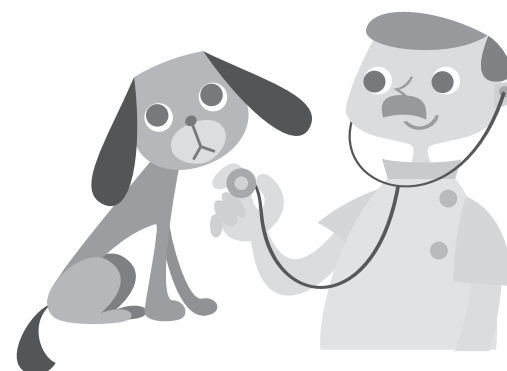
Dogs that have not been vaccinated against rabies cannot be taken overseas. When bringing a dog to Japan from overseas, it is required by law that it be implanted with a microchip. Make sure to have a microchip implanted in your dog before taking it overseas.

[Dog owners' etiquette]

Mitaka City frequently hears complaints about the etiquette of dog owners.

Please remember to ▶

- take home dog waste
- make sure to use a lead at all times
- train your dog thoroughly
- attach a dog license purposes should your dog become lost



Have you applied for the Supplementary Income Payments?

Applications are now being accepted for the Supplementary Income Payment and Special Allowance for Child-Rearing. Please note that applications made after the application deadline (October 1) will not be accepted.

Eligibility: Those on the Foreign Resident Register (excepting illegal and short-term residents) on February 1, 2009

Amount payable: 12,000 Yen (for those 18 or under and 65 or over, 20,000 Yen)

Application forms will not be sent to persons whose resident visa was not valid on February 1. Registration updates can be carried out at the Foreigner registration Section (Civic Center, 1F).

*Application forms will be sent to those who update their registration.

Inquiries: Supplementary Income Payments/ The Special Allowance for Child-Rearing Provision Project Implementation Headquarters Secretariat Call Center (weekdays only, 08:30 to 17:00)

Tel: 76-2222



Information

Information about Mitaka International Society for HOspitality

MISHOP Office

Days: Monday through Saturday (Closed on Sundays and national holidays)

Hours: 9:30 a.m. to 5:15 p.m.

Location: Mitaka City Chuo-Dori Town Plaza 4F, 30-12, Shimorenjaku 3-chome

Tel: 0422-43-7812 **Fax:** 0422-43-9966

E-mail: mishop@parkcity.ne.jp

URL: <http://mishop.jp>



Watch out for photochemical smog!

Photochemical smog is generated in large quantities on days when the temperature exceeds 20 Celsius and there is only light wind. Smog alerts and warnings will be announced through wireless stations for disaster prevention as well as on notice boards at public facilities. Official warnings will as a rule be valid until sunset.

When an alert or alarm is announced:

Refrain from making trips and exercising outdoors.

If your eyes or throat become sore, immediately wash your eyes or gargle as appropriate. In the event that unusual symptoms continue, please contact the Environmental Protection Section or Tama Fuchu Health Center (Tel: 042-362-2334).

Inquiries: Environmental Protection Section Ext: 2523

Mitaka made kiwi fruit wine now on sale in local liquor stores

Around 7,000 bottles of kiwi fruit wine (white, rosé), made with locally produced kiwi fruits and distilled in Otsuki in Yamanashi Prefecture, are now on sale in Mitaka City liquor shops. One 720ml bottle retails at 1,300 Yen (box payable separately). Why not sample a bottle of this fragrant, fruity wine sometime soon?

Musashino Liquor Merchants Cooperative Association

Tel: 43-4055



Now exhibiting at Yuzo Yamamoto Memorial Museum Mitaka: The World and Editors of 'Nihon Shokokumin Bunko'

From 1935 to 1937, Yuzo Yamamoto compiled a series of educational books for children into a 16-volume work entitled 'Nihon Shokokumin Bunko'.

This exhibition explains how a famous and pioneering series such as this was successfully published at a time when speech and freedom of the press were still tightly controlled in Japan. Divided into three sections, (1) Yuzo Yamamoto and the editors, (2) the educational books for children before the war, and (3) 'Nihon Shokokumin Bunko', the exhibition depicts the historical significance and charm of these works, which are read even to this day.

Date and time: Until September 30 (Wed), 09:30 to 17:00 (Museum closes on Mondays, but opens on public holidays falling on Mondays)

*Closed July 21 (Tue)/22 (Wed), September 24 (Thu)/25 (Fri).

Admission: Adults 300 Yen, Groups 200 Yen (20 persons and above)

* Entry is free for persons of middle school age and younger, those in possession of a identification booklet for the disabled (and their carer(s)), students of high school age or younger and their teacher(s) when on a school trip.

Inquiries: Yuzo Yamamoto Memorial Museum Mitaka Tel: 42-6233

◆ Volunteer museum guides give tours on Saturdays, Sundays, and public holidays from 13:00

* Tours will begin at 10:00 on July 18 (Sat) to 20 (public holiday), September 19 (Sat) to 23 (public holiday).

PONYO ON THE CLIFF BY THE SEA - A Special Exhibition 《Making A Film with Pencils》

With a pencil in hand and the desire to make absolutely everything on the screen come to life through very simple drawings, Director Hayao Miyazaki returned to the basics of animation in creating PONYO ON THE CLIFF BY THE SEA.

The Special Exhibition presents how the challenge to animate everything by hand is demonstrated in this film using examples of animation drawings and background art from various scenes.

Make sure you see the actual animation drawings that are rarely displayed in public and a tremendous volume of actual in-between animation drawings.

Visitors will have a chance to renew their experience of PONYO ON THE CLIFF BY THE SEA.



Organizer: Tokuma Memorial Cultural Foundation for Animation

Special Sponsor: Studio Ghibli Inc.

Exhibition Period: Saturday, May 23, 2009 to May 2010 (tentative)

Location: Ghibli Museum, Mitaka (in Inokashira Onshi Koen, West Park) *By Appointment

Inquiries: 0570-055777 (information only)

Events of Mitaka City Arts Foundation

Ticket center Tel.47-5122 Business hours 10:00~19:00

The center is closed on July 6, 13, 21, 22, 27.

www http://mitaka-art.jp/ticket (Japanese only)

☎ = A nursery service is available.

Please apply at least two weeks before the scheduled date of each performance.

Concert Hall "Kaze"

Lunchtime Concert Vol. 5 ☎

Flute recital: Kaoru Namba, **Piano:** Ryusuke Numajiri

September 15 (Tue)

From 11:30 (ends 12:30)

Tickets now on sale All seats reserved

Members 1,000 Yen/Adults 1,500 yen

Program: Faure/Fantasy, Siciliano

Bizet/ Minuet from L'Arlésienne, others



©Risako Awai



©Koichi Miura

☎Kaoru Namba is a member of the Japan Philharmonic Orchestra. This concert promises to be quite an event, with Kaoru Namba performing alongside Ryusuke Numajiri, co-performer on "Flute Revolution", a CD released to rave reviews in 2006.



Upon presentation of a ticket stub after the performance, various offers will become available at the restaurant.

Concert Hall "Kaze"

Jin Oki Flamenco Guitar Concert ☎

September 18 (Fri) From 19:15

Performers: Jin Oki, others

Tickets now on sale

All seats reserved Members 3,500 Yen/Adults 4,000 Yen/

Students 2,000 Yen /Seniors (60 and over) 3,500 Yen

☎Jin Oki was awarded second prize at the 2008 International Flamenco Guitar Competition held in Spain, the home of Flamenco. This concert provides a venue for Oki to display his considerable range of activities, which includes a performance of the travel theme song from Furinkazan, a NHK Period Drama, collaborations with rapper SoulJa, and compositions for many other artists.



Information Service for Foreign Residents

Time : Every 2nd Friday each month from 1:00 to 4:00 p.m (the service counter is open until 3:00). Closed on National Holidays.

Place : Mitaka Municipal Office, 2F Consultation/Information Center

Tel : 0422-44-6600

外国人咨询

时间：毎月第4周星期五
下午一点至四点
(打电话或亲自前来都可以)
咨询预约至三点为止。
地点：咨询信息中心(市政府2楼)
电话：0422-44-6600

外国人相談窓口

英語：毎月第2金曜日
中国語：毎月第4金曜日
時間：いずれも祝日を除く午後1時~4時
(受付は3時まで)
場所：市役所2階相談・情報センター
電話：0422-44-6600



Population (As of June 1, 2009)

Population: 176,643 persons

The number of Foreign Registrants: 3,114 persons

