



Mitaka City's 60th Anniversary

# MITAKA CITY NEWS



October 1, 2010 No. 131

## Published monthly by:

Mitaka Municipal Office, Tokyo

## Edited by:

Secretariat and Public Relations Section  
Mitaka Municipal Office  
1-1, Nozaki 1-chome, Mitaka, Tokyo  
181-8555

Phone: 0422-45-1151

URL: <http://www.city.mitaka.tokyo.jp/english/index.html>

## Expanding the area of door-to-door beverage can and bottle collection from November

We'll change the beverage can and bottle collection method from the Orange Container to door-to-door collection in the following areas, beginning in November: Nozaki 1 chome, Kamirenjaku 6-9 chome, Shinkawa 6 chome, and Shimorenjaku 5-9 chome (except for apartments and condominiums, and dead-end streets).

Put the cans and bottles out in containers such as pails, baskets, or plastic bags in front of the house with other garbage by 8 am on collection days.

Brochures in different languages (Japanese, English, Chinese, and Korean) are now available for foreign residents, and can be picked up at the Garbage Management Section (City Hall Second Building 2nd floor) or MISHOP (3-

30-12 Shimorenjaku, Mitaka City, Mitaka City Chuo-Doori Town Plaza Bldg. 4th Floor)

**Inquiries:** Garbage Management Section Tel. 0422-45-1151 Ext. 2534

<Briefing sessions (in Japanese) will be held as follows> \*Brochures are available at the each session.

Dates and Times	Venues
Tue., Oct. 5, 2010, 7~8 p.m.	Kamirenjaku area Public Hall, 7-8-35 Kamirenjaku
Fri., Oct. 8, 2010, 7~8 p.m.	Shinkawajuku area Public Hall, 6-5-17 Shinkawa
Sun., Oct. 10, 2010, 10~11 a.m.	Mitaka Education Center, 9-11-7 Shimorenjaku
Sun., Oct. 10, 2010, 2~3 p.m.	Renjaku Community Center, 7-15-4 Shimorenjaku

## Subsidies available for influenza vaccination.

Influenza vaccination will be available on October 1st. Mitaka City offers subsidies for vaccination for those who meet certain requirements, such as family members of those on welfare. Details, eligibilities, application, and application schedule will be announced in the November issue of Mitaka City News. The certificate of influenza vaccination and receipt will be required for the application. Please keep original copies of them if you would like to apply.

**Inquiries:** Mitaka Comprehensive Health Center Tel.0422-46-3254

## Japanese Encephalitis vaccination

Foreign registered citizens are also eligible for vaccination at public expense. Mitaka City mails JE vaccination (initial vaccinations for the 1st term) coupons (twice, at public expense) to foreign registered citizens' children in the city who will reach 3 years of age in fiscal 2010. The coupons will be mailed at the end of their birth month. Once you receive the coupon, bring your children to a medical institution to receive the vaccination when they are in good physical condition.

\*If you would like to have your children between the ages of 4 and 7.5 years old vaccinated for the initial JE vaccinations for the 1st term (1st or 2nd time) or the additional JE vaccinations for the 1st term (3rd time), please apply for the coupon at Mitaka Comprehensive Health Center. If you would like 2nd term vaccination, please inquire at the center.

### <JE vaccination schedule and method>

#### ◆ The 1st term (for 3 to 7.5 year-old children)

Initial vaccinations (1st and 2nd time): Twice in 6 to 28 days.

Additional vaccination (3rd time): Once about 1 year after the 2nd of initial vaccination.

#### ◆ The 2nd term (for 9 to 13 year-old children): A single vaccination

**Inquiries:** Mitaka Comprehensive Health Center Tel. 0422-46-3254



**Population** (As of September 1, 2010)

**Population: 176,748 persons**

**The number of Foreign Registrants: 2,999 persons**



## Information

Information about Mitaka International Society for HO's Pitality

### MISHOP Office

Days: Monday through Saturday (Closed on Sundays and national holidays)

Hours: 9:30 a.m. to 5:15 p.m.

Location: Mitaka City Chuo-Dori Town Plaza 4F, 3-30-12, Shimorenjaku

Tel: 0422-43-7812 Fax: 0422-43-9966

E-mail: [mishop@parkcity.ne.jp](mailto:mishop@parkcity.ne.jp)

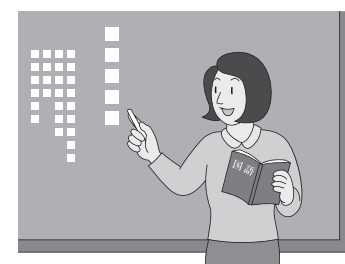
URL: <http://www.mishop.jp>

Established: November 23, 1989



## Accepting students for a Japanese Class!

MISHOP is accepting students for a Japanese class. Let's study everyday dialogs, such as those about shopping and ordering food at a restaurant. We offer volunteer Japanese teachers and small classes! 25 useful situations based on daily life are chosen for the classes and each lesson will focus on one of the situations. You can join the class any time, even in the middle of the course. Lesson 1 starts on October 16. If you are interested in the classes, feel free to contact MISHOP.



Lesson 1 starts on October 16. If you are interested in the classes, feel free to contact MISHOP.

### <Japanese Classes>

**Date:** Every Saturday at 10 a.m. **Location:** MISHOP

**Lesson fees:** 2,000 yen **Texts:** Created by MISHOP

**How to apply:** Apply at the MISHOP office, call or via website.

**Inquiries:** MISHOP Tel. 0422-43-7812 URL: <http://www.mishop.jp/>

### <Lesson Titles and Contents>

Lesson 1: Nice to meet you/Self-introduction/Greeting

Lesson 2: What is this? / Asking the name of things

Lesson 3: Please ~./ Ask a favor

Lesson 4: How much ~?/ Going shopping

Lesson 5: A bowl of Ramen/ Ordering food

Lesson 6: Where is MISHOP?/ Asking for directions

Lesson 7: Get up at 7:00/ Talk about your routine (1)

Lesson 8: Study Japanese/ Talk about your routine (2)

Lesson 9: Get on the train/ Transportation

Lesson 10: 5 people in my family/ Talk about your family

Lesson 11: What do you want to do on your day-off?/Article/Past tense

Lesson 12: What do you want to do?/ Talk about what you want to do

Lesson 13: Which do you like ~?/ Comparing

Lesson 14: Calling on the phone/ How to make phone calls

Lesson 15: What did you do then?/ Talk about your routine (3)

Lesson 16: Have you been to a hot-spring?/Talk about what you've experienced

Lesson 17: Going to a museum/Prohibition and obligation

Lesson 18: Going to see Kabuki/ Progressive

Lesson 19: Present for ~./ Giving and receiving

Lesson 20: What's your plan for the weekend?/Talking about what you want to do and what you are going to do

Lesson 21: What can you do?/Talking about what you can do

Lesson 22: I'm sick/At the hospital

Lesson 23: I need your help/Asking a favor or questions

Lesson 24: What would you do if you had a million yen?/Talk about your dream

Lesson 25: City hall/bank/ At the city hall/bank

## Mitaka Sports Festival and Mitaka Civic Ekiden Relay Race

The 2010 Mitaka Sports Festival, which is part of Mitaka City's 60th anniversary celebrations, and the Mitaka Civic Ekiden Relay Race will be held on the same day. (Application for Mitaka Civic Ekiden Relay Race has been closed.) Enjoy and experience various sports at Osawa comprehensive playground on "National Sports Day."



**Date and Time:** October 11 (Mon, Holiday), the National Sports Day.  
**Location:** Mitaka Osawa Sports Ground and Musashino-no-mori municipal park  
 \*Please use public transportation (extra buses will be running on the day) to the venues.  
**Inquiries:** Sports Promotion Section Tel. 0422-45-1151 Ext. 3324

## Don't abandon your bicycle and play innocent!

### -Abandoned Bicycle Clean-up Campaign-

The "Abandoned Bicycle Clean-up Campaign" will be conducted all over Tokyo for 10 days beginning October 22 (Fri) to 31 (Sun). Mitaka City will carry out this campaign mainly around Mitaka station in cooperation with relevant authorities. The abandoned bicycles around the station pose a safety hazard for pedestrians as well as emergency vehicles, and they also prevent the success of the barrier-free fundamental plan which the city designed. Please follow bicycle parking rules to make our town comfortable and free of abandoned bicycles.

**Inquiries:** Road and City Traffic Management Section Tel. 0422-45-1511 Ext. 2883

#### <Use bicycle-parking areas>

Mitaka city has designated areas in the ordinance where you cannot leave your bicycle. Even if it's for a short time, please pay for bicycle-parking (short-term). If you live relatively close to the station, please try to walk. It's good for your health, too.

#### <Bicycles parked in prohibited areas will be removed>

Bicycles and motorbikes less than 50cc parked in prohibited pedestrian walks or roadways will be removed.

#### <Bicycles will be removed in the following situations>

- Bicycles parked in customer only parking areas for more than 3 hours.
- Bicycles left in free parking areas for a long time (more than 7 days).
- Non-registered bicycles parked in registered bicycles-only parking areas.
- Bicycles not being used properly.

\*Please check the rules of each bicycle-parking area.

#### Bicycle storage place (Nozaki 3-2-3 TEL 33-6967)

Bicycles and motorbikes which are taken away will be stored here.

**Opening hours:** Sunday to Friday 1:00 p.m.~4:00 p.m., Saturday 10:00 a.m. ~ 4:00 p.m. (Closed at the year-end and the beginning of the New Year, and if the Saturday is a public holiday, opening hours are 1:00 p.m. ~ 4:00 p.m.) A removal fee will be charged when you come to claim your bicycle.

**Removal fee:** Bicycle 2,500 yen; Motorbikes 4,000 yen

## The 10th Waku-waku Exchange Festa with sister and friendly cities, towns and villages

Specialty products and local foods from each sister and friendly city, town and village will be gathered. There will be a character show and stalls to keep the children entertained.

**Host:** NPO Mitaka City Tourism Association

**Co-host:** Mitaka City

**Date:** October 17 (Sun.) 10:00 a.m. ~ 3:00 p.m.

**Location:** Mitaka City temporary controlled area (on the site of Tama fruit and vegetable market) Shinkawa 6-37-5 \*The event will be held rain or shine.

**Inquiries:** NPO Mitaka City Tourism Association 40-5525

#### <Participating cities, towns and villages>

- **Sister cities:** Yabuki-town in Fukushima, Tatsuno-city in Hyogo
- **Friendly cities:** Shinjo-city in Yamagata, Otari-village in Nagano, Tono-city in Iwate, Kawakami-village in Nagano, Tozawa-village in Yamagata, Takasu-town in Hokkaido, Kita-Akita-city in Akita, Shirataka-town in Yamagata

## For those who are 70 years old or older, the "Tokyo Silver Pass" is provided

The "Tokyo Silver Pass" is issued to Tokyo residents who are 70 years old and over for use on Tokyo Metropolitan (Toei) transportation and private buses in the metropolitan areas. This pass is valid for one year, from October 1, 2010 to September 30, 2011. Please apply for it at the Odakyu bus offices or information desks. Please refer the list below about the fee.

Eligibility	Fees
Those who are exempt from municipal tax in fiscal 2010	1,000yen*
Those who pay municipal tax in fiscal 2010 with a total income in 2009 of less than 1.25 million yen.	
Those who pay municipal tax in fiscal 2010 with a total income in 2009 of more than 1.25 million yen.	20,510 yen

\*Documents needed for proof.

**Inquiries:** Tokyo Bus Association Silver Pass Information 03-5308-6950 (From 9:00 a.m. to 5:00 p.m., except Saturday, Sunday and public holiday)

## Events of Mitaka City Arts Foundation

Ticket center Tel: 47-5122 Business hours 10:00 a.m. ~ 7:00 p.m.

Closed: October 4, 12, 13, 18, 25

http://mitaka-art.jp/ticket (Japanese only)

☎ = A nursery service is available. (Please apply 2 weeks prior to each performance.)

### Mitaka City Public Hall

## Staff Benda Bilili ☎

**Date and Time:** Sunday, October 17, from 5 p.m.

**Tickets now on sale**

**All seats reserved.**

Members 3,500 yen/ Nonmembers 4,000 yen/  
 Seniors (60 years or older) 3,500 yen/ Junior High/High School, and College Students 2,000yen/ Elementary School Students 1,500 yen

☎ Their first visit to Japan! Street musicians in wheelchairs with indomitable soul. Enjoy Congolese rumba filled with Latin musical flavor!!



### Concert Hall "Kaze"

## The 11th Mitaka Junior Orchestra (MJO) Concert ☎

**Date and Time:** Sunday, October 24, from 2 p.m.

\*admission to 4 year-olds or older.

**Tickets now on sale**

**All seats reserved.**

Members 450 yen/ Nonmembers 500yen/ Free admission for children 4 years old or older through high school students.

\*No elementary school children or younger are allowed in the front row of the second floor or the balcony seats for safety.

**Performers:** Karl Naito (Conductor/ Piano solo), MJO (Orchestra)

**Program:** Overture to The Marriage of Figaro, Mozart

Piano Concerto No. 1, Beethoven (Conductor and Piano: Karl Naito)

Overture, Scherzo and Finale, op.52, Schumann

☎ MJO performed at Junior Orchestra Festival held in Niigata in this August. This 11th Autumn Concert will center around "Overture, Scherzo and Finale, op.52" by Shumann, which they played in Niigata, and "Piano Concerto No.1" by Beethoven with Conduction and piano solo by Karl Naito



### Concert Hall "Kaze"

## Ryusuke Numajiri and Tokyo Mozart Players (TMP) 55th 200th birth anniversary concert of Robert Schumann, vol. 2 ☎

**Date and Time:** Saturday, November 27, from 6 p.m.

\*Pre-concert performance by Mitaka Junior Orchestra from 5:30 p.m.

**Tickets now on sale**

**All seats reserved.**

Members 3,000 yen/ Nonmembers 3,500 yen/ Students 1,800 yen

**Performers:** Ryusuke Numajiri (Musical director, conductor), TMP (Orchestra)

**Program:** Symphony No. 2 in C major, Op. 61, and Symphony No. 3 in E-flat major (Rhenish), Op. 97, by Schumann

☎ 2010 is the 200th anniversary of the birth of Robert Schumann, a romantic composer of 19th century Europe. His works from "Dresden era" and "Düsseldorf era," so-called Schumann's "Maestro Period," will be played in this concert.



©Koichi Miura

### Information Service for Foreign Residents

**Time:** Every 2nd Friday each month from 1:00 to 4:00 p.m. (the service counter is open until 3:00). Closed on National Holidays.

**Place:** Mitaka Municipal Office, 2F Consultation/Information Center

**Tel:** 0422-44-6600

#### 外国人咨询

时间: 毎月第4周星期五  
 下午一点至四点  
 (打电话或亲自前来都可以)  
 咨询预约至三点为止。  
 地点: 咨询情报中心(市政府2楼)  
 电话: 0422-44-6600

#### 外国人相談窓口

英語: 毎月第2金曜日  
 中国語: 毎月第4金曜日  
 時間: いずれも祝日を除く午後1時~4時  
 (受付は3時まで)  
 場所: 市役所2階相談・情報センター  
 電話: 0422-44-6600