



MITAKA CITY NEWS



February 1, 2011 No. 135

Mitaka City's 60th Anniversary

Published monthly by:
Mitaka Municipal Office, Tokyo
Edited by:
Secretariat and Public Relations Section
Mitaka Municipal Office
1-1, Nozaki 1-chome, Mitaka, Tokyo
181-8555
Phone: 0422-45-1151
URL: <http://www.city.mitaka.tokyo.jp/english/index.html>

Mitaka-no-Mori Animation Festival 2011

Date: March 4 (Fri.) ~ 6 (Sun.)
Venue: Mitaka City Arts Center, Theater "Hoshi"/Basement Exhibition Room
▶ Exhibition of autographed recommendation letters for 50 works selected by Hayao Miyazaki, Studio Ghibli. (March 4 ~ 6)
*Please inquire at Livelihood and Economy Section for opening hours.
▶ Screenings of animated films from around the world with lectures (March 5)
*Attendees will be selected by lottery. Please contact Community and Culture Section for details.
▶ Independent animated film festival (March 6)
Short animated films by young artists will be shown. The films will be juried after the screening.
* Please inquire at Livelihood and Economy Section for opening hours.
Inquiries: Livelihood and Economy Section, Tel. 0422-45-1151 Ext.2542, Community and Culture Section, Tel. 0422-45-1151 Ext.2517

GHIBLI MUSEUM, MITAKA

★"Mr. Dough and the Egg Princess," the latest short animation directed by Hayao Miyazaki, is now showing.

The latest short animated film "Mr. Dough and the Egg Princess" is exclusively showing at the Ghibli Museum Saturn Theater. This is the 8th film in the Saturn Theater collection. Miyazaki, who wrote, adapted, and directed the film, was inspired by the painting "The Harvesters" by his favorite Dutch painter, Pieter Bruegel the Elder. The Ghibli Museum is planning to create 12 films in total, and the 9th film will be completed soon. Don't miss the next films, too!



©2010 Nibariki - G
Mr. Dough and the Egg Princess (about 12 minutes)

(Story overview) In a lonesome water mill deep in a forest of briars and brambles lives an old witch. There the witch makes the Egg Princess her servant. One night, a large batch of kneaded dough resting in a trough suddenly comes to life and the Egg Princess and the dough decide to run away. The old witch chases them and they blow up a storm in a village in the middle of the harvest.

Date: March 14 (Mon.), 2011 (to be determined)

★The Ghibli Forest Film Exhibition

The exhibition also has been renovated according to the release of the new film. There is a new area dedicated to this film featuring a diorama of the scene in a wheat field where the Egg Princess runs away with Mister Dough. There are also demonstrations of flour grinding using a traditional stone grinding wheel. From wheat to flour to fluffy baked bread, the transformation process is thoughtfully explained. Visit with your family!

Date: until May 2011 (to be determined)

* Visitors allergic to wheat and wheat byproducts should be advised that there are demonstrations of flour grinding at this Special Exhibition.

Venue: GHIBLI MUSEUM, MITAKA (1-1-83 Shimo-Renjaku, by appointment)

Inquiries: Information dial 0570-055777 (Japanese only), <http://www.ghibli-museum.jp/en/>

Special tickets now on sale to people living near Mitaka and Mitaka residents!

Eligibility: Persons living*, working or studying in Mitaka City, Musashino City, Koganei City, Nishitokyo City.

* Residents must be on the city register.

Identification verifying eligibility is required to purchase tickets.

Cost: Adults 1,000 Yen, Junior High/High School Students 700 Yen, Elementary School Students 400 Yen, Preschool children over 4 years old 100 Yen, Children under 4 years old Charge-free * Maximum 6 tickets per person

Tickets on sale at: Mitaka Tourist Office 9:00 a.m. to 6:00p.m. (closed Tuesdays)

Mitaka Ekimae Kyodo Building F1, 3-24-3 Shimorenjaku, Mitaka City, 181-0013 Tel: 0422-40-5525

Number of tickets available: 50 morning tickets (10:00a.m. to 12:30p.m. entry), 50 afternoon tickets (2:00p.m. to 4:30p.m. entry). First come, first served.

Various certificates are available at automated certification issuing machines

[Types of certification available from machines]

Certification of information recorded on foreign resident registration file/Stamp registration certificate/ various taxation certificates

When using the automated issuing machines, you will require either a "Stamp Registration and Mitaka Citizen Card" or "Mitaka Citizen Card" with a registered PIN number. Applications can be made at the Civil Affairs Section (Mitaka City

Are you prepared for terrestrial digital television broadcasts?

~ Current analog TV broadcast will end by July 2011! ~

Current analog TV broadcast will end by July 2011 and will be completely switched over to terrestrial digital TV broadcast. After the change, analog TVs will require a terrestrial digital tuner in order to show TV broadcasts (terrestrial digital TV broadcasts).

Inquiries: Information Technology Promotion Section Tel. 0422-45-1151 Ext. 2142

<To be able to watch terrestrial digital TV...>

You have to prepare to be able to watch terrestrial digital TV with one of the options below.

1. Buy a terrestrial digital TV broadcast compatible TV (You need a UHF antenna).
2. Connect a terrestrial digital tuner to your current TV (You need a UHF antenna).
3. Watch TV broadcast through cable TV.

◆Inquiries about a terrestrial digital TV broadcast

Where to inquire: Ministry of Internal Affairs and Communications terrestrial digital TV broadcast Call Center

Tel: 0570-07-0101 or 03-4334-1111

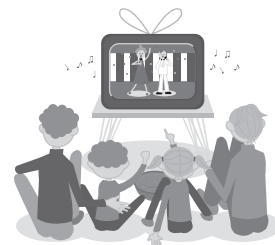
Hours: Weekday: 9 a.m. ~ 9 p.m. Weekend, public holiday: 9 a.m. ~ 6 p.m.

◆Inquiries about a BS digital broadcast

Where to inquire: BS digital broadcast inquiry center

Tel: 0570-01-2011 or 045-345-4080

Hours: Weekday: 9 a.m. ~ 9 p.m. Weekend, public holiday: 9 a.m. ~ 6 p.m.



Information about Terrestrial digital TV broadcast telephone support center

Mitaka City has "Terrestrial digital TV broadcast telephone support center" for citizens to call and ask about terrestrial digital TV broadcasts. Please feel free to call.

Where to inquire: Terrestrial digital TV broadcast telephone support center (English only) **Tel:** 0422-40-9755

Hours: Weekday: 8:30 a.m. ~ 5:30 p.m.

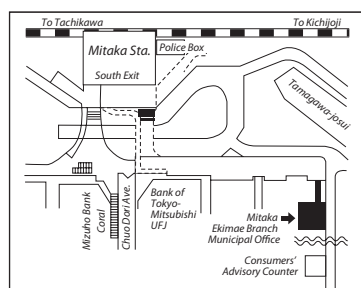
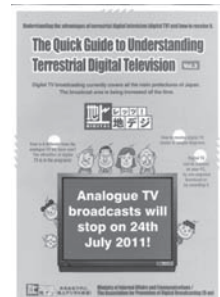
<Please refer to English-language pamphlet>

The Ministry of Internal Affairs and Communications provides an English version of "The Quick Guide to Understanding Terrestrial Digital Television". You can take a look at the pamphlet at the municipal office.

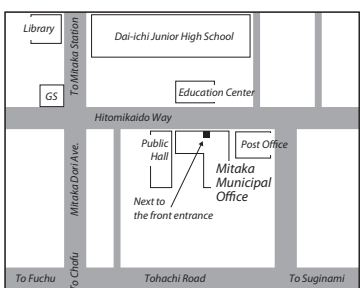
Where to get the pamphlet: Beside the TV monitor of Musashino Mitaka Cable TV in the citizen hall on the 1st floor of the municipal office.

<Please beware of scams!>

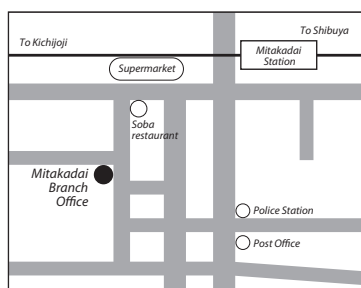
Some people are pretending to be TV researchers or construction workers, and are requesting payments so you may be presented with fraudulent bills/charges. Please watch out for these scams connected to Terrestrial digital TV broadcasts.



① Mitaka Ekimae Branch Municipal Office



② Mitaka Municipal Office



③ Mitakadai Branch Office

- ① **Mitaka Ekimae Branch Municipal Office** (Shimorenjaku 3-24-3-202, 2nd floor of Mitaka Ekimae Kyodo Bldg.)
- ② **Mitaka Municipal Office** (next to the front entrance) (Nozaki 1-1-1)
- ③ **Mitakadai Branch Office** (Inokashira 2-13-2)

Inquiries: Civil Affairs Section, General Affairs and Pension Subsection, General Affairs Desk

Tel: 0422-45-1151 Ext. 2323

Registration applications now accepted for use of bicycle parking lots



- 1. Period of application:** Until February 10 (Thu.) (Postal applications must be postmarked by February 10).
- 2. Registration validity:** April 1, 2011~March 31, 2012 (1 year)
- 3. Eligible applicants**
 - (1) Regular users (Home~Mitaka Sta.)
Those whose residence is located about 800 meters or more from Mitaka Station and who use the station for commuting.
 - (2) Reverse users (Mitaka Sta.~Office or school)
Those whose office or school is located about 800 meters or more from Mitaka Station and who come to the station by public transportation.
 - (3) Special users (Less than 800 meters from the station, with the following special cases)
 - A Holders of a physical disability certificate or Ai-no-techo (certificate for children with developmental disability)
 - B Those who are 65 years of age or older as of April 1, 2011
 - C Those who need to ride about 800 meters or more from their residences to the station due to special reasons, such as picking up children at day-care centers on the way.
- 4. Distribution of application forms:** Application forms are available at the Road and City Traffic Management Section (51st window on the 5th floor of the Municipal Office), the Municipal Office branch, and bicycle parking lot offices (1, 5, 9 on the map below, opening hours: 7 a.m. ~10 a.m, and 3 p.m. ~ 6 p.m. on weekdays).
- 5. Required documents for application**
 - Registration application form
 - A copy of your bicycle safety license, if you have one (or a copy of your bicycle safety certificate issued by Musashino city).
 - Certificate for special users (if you fall into 3(3)-C above) or a copy of your physical disability certificate or Ai-no-techo (if you fall into 3(3)-A).
 - Fee exemption application (if you are eligible for the exemption)
- 6. Priority order**

1	Holders of a physical disability certificate or Ai-no-techo
2	Those who are 65 years of age or older as of April 1, 2011
3	Those who earned a bicycle safety license within the last 3 years (or bicycle safety certificate issued by Musashino city)
4	Reverse users (Those who don't leave the bicycle during daytime)
5	Those with resident registration in Mitaka city

7 Applications

Send your completed application with the necessary documents to “〒181-8555 Road and City Traffic Management Section” through mail (the application must be postmarked by Feb.10), or submit them at the windows for bicycle parking (from 9:30 a.m. to 4:00 p.m.) on the first floor of City Hall or branch city offices by February 10 (Thu.).

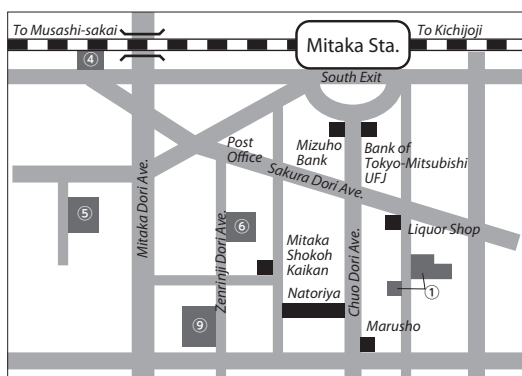
- * One application per person only. Users will be selected by lottery if the number of applicants exceeds capacity, and will be notified in early March.
- * User registration certificate (a sticker) will be sent to accepted applicants after payment has been confirmed.
- * The application documents will be held or destroyed as per Mitaka city personal information protection law.
- 8. Fee exemption:** Fee exemption available for physical disability certificate holders. Please submit a copy of the certificate with your application.
- 9. Bicycle theft prevention registration:** The theft prevention registration number is required for application. Please bring the number with you when submitting at the window.

Annual registration fees

		Adults	Students
Mitaka Residents	Bicycle	3,000 yen	2,000 yen
	Motor scooter	4,000 yen	3,000 yen
Non-Mitaka Residents	Bicycle	4,000 yen	3,000 yen
	Motor scooter	6,000 yen	4,000 yen

The list of bicycle parking lots

No.	Bicycle Parking Lot Name	Location	Number of registrations accepted
①	Sakura Dori Avenue Bicycle Parking Lot	3-21-30 Shimorenjaku 3-28-13 Shimorenjaku (Please use whichever is available)	1,650 bicycles
④	Keyakibashi Bicycle Parking Lot	2-21-3 Kamirenjaku	170 bicycles
⑤	Kamirenjaku 2-chome Bicycle Parking Lot	2-7-25 Kamirenjaku	450 bicycles
⑥	Zenrinji Dori Avenue Bicycle Parking Lot	3-37-26 Shimorenjaku	350 bicycles
⑨	Zenrinji Dori Avenue No.2 Bicycle Parking Lot	3-41-4 Shimorenjaku	300 bicycles/100 motor scooters



Events of Mitaka City Arts Foundation

Ticket center Tel: 47-5122 Business hours 10:00 a.m. ~ 7:00 p.m.
The center is closed on February 7, 14, 21, and 28.
www http://mitaka-art.jp/ticket (Japanese only)
☎ = A nursery service is available. (Please apply 2 weeks prior to each performance.)

Concert Hall "Kaze"

Kuricorder Quartet Family Concert ☎

Date and Time: March 6 (Sun.) 2011, 3 p.m.

Tickets now on sale

All seats reserved.

Members 3,150 yen/ Nonmembers 3,500 yen/
High school students 2,000 yen/ Junior high school students and under (over 4 years old) 1,500 yen

No children 3 years old and under will be allowed into the concert

Program: Opening theme song for "PythagoraSwitch," Pejie, Tsumiki no ie, Main Title ~guitar version~, Bonnet Bus, and etc.

☎ Kuricorder Quartet, an unique band with recorders and other familiar musical instruments including ukuleles, whose cover of "The Imperial March (Darth Vader's Theme)" made a big hit in summer 2005, is coming to our Concert Hall "Kaze." Come to the concert with your family and friends!



Concert Hall "Kaze"

Ryota Komatsu and Last Tango Sensations featuring SINSKE ☎

Special concert for the 90th anniversary of the birth of Astor Piazzolla

Date and Time: May 27 (Fri.) 2011, 7:15 p.m.

On-sale date: February 3 (Thu.), tickets available now for members.

All seats reserved. Members 4,050 yen/ Nonmembers 4,500 yen/ Students 2,500 yen

Program: Piazzolla/ Libertango, Vebraphonissimo etc.

☎ This year is the 90th anniversary of the birth of Astor Piazzolla, known as the Tango Revolutionist. Concert Hall Kaze invites bandoneón (concertina) player Ryota Komatsu, who has generated a renewed interest in tango music among young people, as a main artist to celebrate the anniversary with a special concert. Experience and enjoy the world of Piazzolla with its edgy rhythm and cool, lyrical melody.



Information



Information about Mitaka International Society for HOspitality

MISHOP Office

Days: Monday through Saturday (Closed on Sundays and national holidays)

Hours: 9:30 a.m. to 5:15 p.m.

Location: Mitaka City Chuo-Dori Town Plaza 4F, 3-30-12, Shimorenjaku

Tel: 0422-43-7812 **Fax:** 0422-43-9966

E-mail: mishop@parkcity.ne.jp

URL: http://www.mishop.jp

Established: November 23, 1989



Population (As of January 1, 2011)

Population: 176,471 persons

The number of Foreign Registrants: 3,107 persons



Information Service for Foreign Residents

Time: Every 2nd Friday each month from 1:00 to 4:00 p.m. (the service counter is open until 3:00). Closed on National Holidays.

Place: Mitaka Municipal Office, 2F Consultation/Information Center

Tel: 0422-44-6600

外国人咨询

时间: 毎月第4周星期五
下午一点至四点
(打电话或亲自前来都可以)
咨询预约至三点为止。
地点: 咨询情报中心(市政府2楼)
电话: 0422-44-6600

外国人相談窓口

英語: 毎月第2金曜日
中国語: 毎月第4金曜日
時間: いずれも祝日を除く午後1時~4時
(受付は3時まで)
場所: 市役所2階相談・情報センター
電話: 0422-44-6600