



MITAKA CITY NEWS

May 1, 2011 No. 138

Published:
Mitaka Municipal Office, Tokyo
Edited by:
Secretariat and Public Relations Section
Mitaka Municipal Office
1-1, Nozaki 1-chome, Mitaka, Tokyo
181-8555
Phone: 0422-45-1151
URL: <http://www.city.mitaka.tokyo.jp/english/index.html>
MITAKA CITY NEWS providing business and event information of Mitaka city is published on 1st of every month.

Disaster Support Program Center for Internationals to be Established in Times of Disaster

On March 11th the Great East Japan Earthquake wreaked tremendous damage. Japan has experienced many earthquakes and is also expected to have big earthquakes in the future. In order to create a society in which foreigners can live without anxiety, MISHOP will set up a Disaster Support Program Center for Internationals in times of disaster, including earthquakes, to provide interpretation service, safety confirmation service, and other information regarding living.

<Roles of Disaster Support Program Center for Internationals>

1. Collection and provision of information

Immediately after a disaster, the center will collect and provide the necessary information for foreigners, including information about emergency evacuation areas.

2. Assembling and coordinating volunteers

The center will assemble volunteer interpreters and translators for emergency

operations and will also dispatch the volunteers to needed areas in cooperation with the headquarters for disaster countermeasures of the city.

3. Safety confirmation of foreign residents

The center will confirm the safety of foreign residents upon request and will contact them in cooperation with the headquarters for disaster countermeasures of the city.

4. Consultation on daily life

The center will consult and advise on immediate living needs, including living in evacuation centers and moving to temporary housing. Also, the center will dispatch volunteer interpreters and translators to consultation windows for reconstruction of daily life needs.

Inquiries: Mitaka International Society for HOspitality (MISHOP)

Tel.: 0422-43-7812

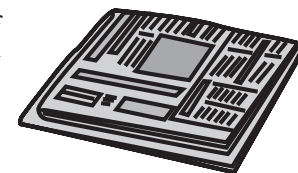
If you need medical care on holidays, at night, or in an emergency

In the case of sudden illness when medical institutions are closed, such as on holidays or at night, the facilities listed below provide initial treatment and temporary treatment. Please take your health insurance card with you. We may have "planned power outages," which will be grouped outages by area and time, in case of a shortage of electricity supply due to the heavy damage to TEPCO facilities by the Great East Japan Earthquake. In case a "planned outage" is held, clinics in the affected area may close. Please check with each clinic before visiting.

- **Weekend and Holiday Medical Clinic / Weekend and Holiday Twilight Medical Clinic (Internal medicine/Pediatrics)**
(Sundays, national holidays, the end and the beginning of the year)
Mitaka-shi Ishikaikan (1-7-23 Nozaki/ Tel.: 0422-24-8199)
10:00~11:45 a.m., 1:00~4:30 p.m., 6:00~9:30 p.m.
- **Weekend and Holiday Emergency Dental Clinic**
(Sundays, national holidays, the end and the beginning of the year)
Mitaka City Comprehensive Health Center (6-35-28 Shinkawa/ Tel.: 0422-46-3234)
10:00~11:45 a.m., 1:00~4:00 p.m.
- **Emergency Medical Center**
Kyorin University Hospital (6-20-2 Shinkawa/ Tel.: 0422-47-5511)
- **Emergency Hospitals in Mitaka**
Nomura Hospital (8-3-6 Shimorenjaku/ Tel.: 0422-47-4848)
Mitaka Chuo Hospital (5-23-10 Kamirenjaku/ Tel.: 0422-44-6161)
- **Tokyo Metropolitan Health and Medical Information Center**
(English/ Chinese/ Korean/ Thai/ Spanish)
Tel.: 03-5285-8181 (9:00 a.m. ~ 8:00 p.m.)
Website: <http://www.himawari.metro.tokyo.jp/>

About Mitaka City News

MITAKA CITY NEWS is published on the 1st of every month to introduce the projects of the city and event information to foreign residents. You can find it at the places listed below. For those who wish to receive it by mail, we will send it to you.



<Distribution Sites>

Mitaka Municipal Office
Municipal Office Branch
[Mitaka Ekimae, Mitakadai, Tobu (East), Seibu (West)]
Mitaka Library
Mitaka Ekimae Library
Seibu Library
Social Education Center
MISHOP
City Arts Center
Gallery of Art
Mitaka Station
Musashi-sakai Station
Mitakadai Station
Inokashira-koen Station
Mitaka Station South Exit East bicycle parking lot
Mitaka Station South Exit West bicycle parking lot
Hello Work Mitaka
Traffic Enforcement Head Office
International Christian University
The University of Tokyo Mitaka International Hall of Residence

"Information Service for Foreign Residents in Chinese" will be terminated.

"Information Service for Foreign Residents in Chinese" which has been open every 4th Friday will be terminated. If you require the service, call Tokyo Metropolis Information Service for Foreign Residents (Chinese): Tel. 03-5320-7766.

Inquiries: Consultation/Information Center, Tel. 0422-44-6600

"中文外国人咨询" 将被停止。

毎月第4个星期五实施的"中文外国人咨询" 将被停止。希望者, 请利用东京都实施的外国人咨询(中文): 电话 03-5320-7766。

咨询处: 咨询信息中心 电话: 0422-44-6600

Information Service for Foreign Residents

Time: Every 2nd Friday each month from 1:00 to 4:00 p.m. (the service counter is open until 3:00).
Closed on National Holidays.

Place: Mitaka Municipal Office, 2F Consultation/Information Center
Tel: 0422-44-6600

外国人相談窓口

英語: 毎月第2金曜日
時間: いずれも祝日を除く午後1時~4時 (受付は3時まで)
場所: 市役所2階相談・情報センター
電話: 0422-44-6600

Information

Information about Mitaka International Society for HOspitality

MISHOP Office
Days: Monday through Saturday (Closed on Sundays and national holidays)
Hours: 9:30 a.m. to 5:15 p.m.
Location: Mitaka City Chuo-Dori Town Plaza 4F, 3-30-12, Shimorenjaku
Tel: 0422-43-7812 **Fax:** 0422-43-9966
E-mail: mishop@parkcity.ne.jp
URL: <http://www.mishop.jp>

Established: November 23, 1989



Population (As of April 1, 2011)

Population: 176,462 persons

The number of Foreign Registrants: 3,071 persons



To live happily with your dogs

Please register and vaccinate your dogs

In Japan, dogs older than 91 days old (approx. 3 months old) must be registered with local authorities, and must be vaccinated against rabies once a year. To live happily with your dogs, please register your dogs with the city and make sure that their vaccinations are up to date. Understanding the rules will improve the manners of dog owners.

Inquiries: Environmental Policy Section Ext.2523

< Please register your dog >

To register your dog, come by the Civil Affairs Section service counter on the first floor of the Mitaka Civic Center, or any other city office branch service counter. After submitting your application, you will be issued with a dog license.

Fee: 3,000 yen (per dog)

<Group inoculation service will be provided>

We have organized days on which rabies shots will be given to dogs, on the dates listed below. Along with the shot, you will receive a certificate stating that your dog has received the vaccination at the facility. If you have not registered your dog yet, you will be able to register your dog at that time as well.

* If you also register your dog as well, the additional registration fee of 3,000 yen (per dog) will apply.

◎Reception

Those who received a guide notice from the city may view the backside and fill out your dog's medical history provided and bring it to the location.

* Please inform us if your dog is pregnant or ill before coming to get the shot.

In some cases, your dog may not be able to get an inoculation.

◎Fee

3,550 yen (shot 3,000 yen · certificate 550 yen)

* If you also register your dog as well, an additional fee of 3,000 yen will apply.

◎In case of rain

If it is raining by 8:45 a.m., the service will be postponed to prevent accidents (if it rains on the rain date as well, it will be cancelled entirely). It is possible that the service might be cancelled midway through due to the weather.

<Individual shots are also available>

You can also receive rabies shots at your local veterinary clinic (fees will vary for each clinic). Please bring the certificate issued by the clinic signifying that your dog has received the shot to the city office (Civil Affairs Section service counter) or any city office branch service counter to receive an official certificate from the city (fee 550 yen).

2011 Schedule for Group Inoculation Service

Date	Time	Location
May 10 (Tue) In case of Rain May 17 (Tue)	9:30a.m.~10:10a.m.	Shinwa Child Park (Shimorenjaku 2-26)
	11:00a.m.~11:30a.m.	Inokashira Community Center (Inokashira 2-32-30)
	1:30p.m.~2:20p.m.	Nakashima Shrine (Nakahara Elementary School West Side) (Nakahara 3-4-4)
May 11 (Wed) In Case of Rain May 18 (Wed)	9:30a.m.~10:10a.m.	Osawa Community Center (Osawa 4-25-30)
	11:00a.m.~11:30a.m.	Mitake Shrine (Jindaiji 1-14-1)
	1:30p.m.~2:20p.m.	Shinkawatenjin Shrine (Shinkawa 2-1-21)
May 12 (Thu) In Case of Rain May 19 (Thu)	9:30a.m.~10:10a.m.	Mitaka Agriculture Park (Shinkawa 6-30)
	11:00a.m.~11:30a.m.	Osawa Youth Grounds (Nozaki 3-27)
	1:30p.m.~2:20p.m.	Ikoin (Shinmei Shrine) (Kamirenjaku 7-26-24)

Mitaka International Exchange Walk Rally 2011

On "National Walk Rally Day," MISHOP is holding "Mitaka International Exchange Walk Rally 2011," to promote interaction and cultural exchange between Japanese and foreign residents. Make small groups with people from different nations and walk through famous spots in Mitaka City while answering trivia questions along the way.



Inquiries: Mitaka International Society for HOspitality (MISHOP)
Tel. 0422-43-7812, E-mail: mishop@parkcity.ne.jp
Website: <http://www.mishop.jp/>

Date and Time: May 15th (Sun.) Noon ~4 p.m. (the event will be held in light rain)

* In the event of heavy rain, the MISHOP office will make a decision by 9:30 a.m. as to whether or not the event will proceed.

Assembly Point: Inokashira-koen Station (Keio Line)

Course: From Inokashira-koen Station to Mitaka Ekimae Community Center (there will be a ceremony after you reach the goal)

Participants: First 100 entries.

Participation Fee: 100 yen (advanced payment)

Application: Apply by visiting, phone, or through the MISHOP website by May 9th (Monday) with your name, address, cell phone number, gender, date of birth, and nationality (and spoken languages).

Please Note

- Prior application is mandatory. You will not be able to apply at the event.
- Please eat lunch beforehand.
- Please wear an outfit and shoes that are comfortable to walk in.

Seeking Volunteer Staff Members!

We are currently seeking volunteers to help out with the event. We need help with examining the course, creating trivia questions, setting things up at the event, reception and other activities. Please contact the MISHOP office if you are interested.

Events of Mitaka City Arts Foundation

Ticket center Tel: 47-5122 Business hours 10:00 a.m. ~ 7:00 p.m.

The center is closed on May 2, 9, 16, 23, and 30.

www <http://mitaka-art.jp/ticket> (Japanese only)

☎ = A nursery service is available. (Please apply 2 weeks prior to each performance.)

Concert Hall "Kaze"

Ryota Komatsu and Last Tango Sensations featuring SINSKE

Special concert for the 90th anniversary of the birth of Astor Piazzolla ☎

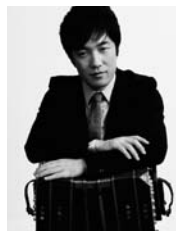
Date and Time: May 27 (Fri.), at 7:15 p.m.

Tickets now on sale. All seats reserved.

Members 4,050 yen/ Nonmembers 4,500 yen/ Students 2,500 yen

Program: Piazzolla/ Libertango, Vebraphonissimo etc.

☎ This year is the 90th anniversary of the birth of Astor Piazzolla, known as the Tango Revolutionist. Concert Hall Kaze invites bandoneón player Ryota Komatsu as a featured artist to celebrate the anniversary with a special concert. Experience and enjoy the world of Piazzolla with its edgy rhythm and cool, lyrical melody.



[Related program: Pre-talk]

Date and Time: May 17 (Tue.) at 7:00 p.m.

Place: Mitaka City Arts Center, the first rehearsal studio

Tickets now on sale.

Members 1,800 yen/ Nonmembers 2,000 yen/ Students 1,500 yen

Speakers: Ryota Komatsu and Mitsumasa Saito (a Piazzolla researcher)

Concert Hall "Kaze"

The first Tango.♪

Ryota Komatsu: Kids Concert ☎

Date and Time: August 6 (Sat.), 2 p.m. (planned to finish at 3 p.m.)

Tickets now on sale

All seats reserved.

Members 2,700 yen/ Nonmembers 3,000 yen/ High school and junior high school students 2,000 yen/ 3 year-old ~ elementary school children 1,500 yen

* Children also need their own tickets. No children of 2 years old and under will be allowed into the concert.

* Preschool children will not be allowed in the front row of the second floor or the balcony seats for safety.

Program: Piazzolla/ Escualo, Libertango

Rodriguez/ La Cumparsita, and others

☎ A family concert produced by Ryota Komatsu, who himself is a father of three children.

The stage, including an explanation of various bandoneon (concertina) instruments, and showing the performers' hands on screen will be enjoyable for kids as well as for adults.

