

MITAKA CITY NEWS

September 1, 2013 No. 166

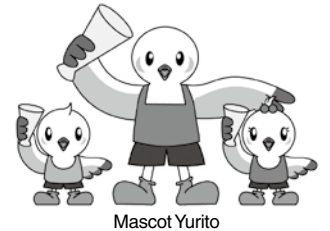
Published monthly by:
Mitaka Municipal Office, Tokyo
Edited by:
Secretariat and Public Relations Section
Mitaka Municipal Office
1-1, Nozaki 1-chome
Mitaka, Tokyo 181-8555
Phone: 0422-45-1151
URL: <http://www.city.mitaka.tokyo.jp/foreign/english/index.html>
MITAKA CITY NEWS providing business and event information of Mitaka city is published on 1st of every month.

September 28 through October 14

Coming Soon—Sports Festival in Tokyo 2013!

The long-awaited Sports Festival in Tokyo 2013 (combining the 68th National Sports Festival and the 13th National Sports Festival for People with Disabilities) begins at the end of this month. The National Sports Festival is taking place in Tokyo for the first time in 54 years—and for the first time ever in Mitaka City. This is a wonderful opportunity to see top athletes from all over Japan competing for the highest rank in the nation up close. Admission to watch the competitions held in Mitaka City is free. We hope as many people as possible will come out to root for these fine athletes.

Inquiries: National Sports Festival Promotion Section, Ext. 3343



Mascot Yurito

Mitaka City Competition Schedule

◆The 68th National Sports Festival Official Competitions

◇Football (Men's)

Round 1	Sept. 29 (Sun.)	Game 1	Game 2	Game 3
		From 10:00 a.m.	From 12 noon	From 2:00 p.m.

Program: Football at the National Sports Festival will be played in a tournament format, with a first and second half of 35 minutes each and a halftime of 10 minutes.

What to watch for: The strategies and formations of the teams, as well as the powerful individual techniques used, such as brilliant shooting and dribbling.

◇Softball (Men's)

Round 1	Sept. 29 (Sun.)	Game 1	Game 2	Game 3
		From 10:00 a.m.	From 12 noon	From 2:00 p.m.
Quarterfinals	Sept. 30 (Mon.)	From 10:00 a.m.	From 12 noon	-
Semifinals	Oct. 1 (Tue.)	From 10:00 a.m.	-	-
Finals		From 12:30 p.m.	-	-

Program: Seven-inning games; tournament format.

What to watch for: While similar to baseball, the distance between bases in softball is two-thirds that of baseball, increasing the pace of the game.

Venue (other than for paddle tennis)

◇Mitaka City Osawa Sports Ground

(5-7-1 Osawa; seven minutes walk from the Osawa Community Center bus stop)

Note: On the days of the sports events, there will be a shuttle bus from Mitaka Station's south exit to Osawa Sports Ground (via Mitaka Municipal Office).

Paddle Tennis Site

◇Dai-ichi Gymnasium

(1-1-1 Nozaki; one minute walk from the Mitaka Shiyakusho-mae bus stop)

◇Dai-ichi Junior High School

(9-10-1 Shimorenjaku; near the Mitaka Keisatsusho-mae bus stop)

◇Taisei High School Arena Maishin (6-7-5 Kamirenjaku; near the Taisei Koko-mae bus stop)

Note: Please use public transportation for any of the above-mentioned events.



◇Archery (all categories)

Category	Date	Time
Women's preliminaries	Oct. 5 (Sat.)	10:25 a.m. to 12:25 p.m.
Men's preliminaries		1:25 to 3:25 p.m.
Individual awards ceremony		4:10 to 4:40 p.m.
Final rounds (round 1 through semifinals)	Oct. 6 (Sun.)	9:00 a.m. to 4:05 p.m.
Final rounds (to determine third-place finisher, finals)	Oct. 7 (Mon.)	9:00 a.m. to 1:40 p.m.
By category/comprehensive awards ceremony		2:25 to 3:05 p.m.

Program: Each team has three members. The teams moving on to the final rounds and the ranking for individual achievement are determined during the preliminaries. The final rounds are conducted in a tournament format.

What to watch for: This competition requires concentration and mental strength as well as physical power. Since the competing teams take turns, the excitement builds each time a contestant scores and people cheer.

◆Demonstration Sports Event

◇Paddle Tennis: October 6 (Sun.), from 9:00 a.m. (Games begin from 9:30 a.m.)

This is a form of indoor tennis with techniques and rules similar to those of regular tennis. However, the court is about half the size of regular tennis court, the serve must be done from below the waist, and only one serve is allowed. The game was so named because the racket looks like an oar or paddle.

Note: Reservations are required for participation in Paddle Tennis, and applications are no longer being accepted. The event, however, is open to the public.

◆The 13th National Sports Festival for People with Disabilities

◇Archery: October 13 (Sun.)

This competition is for people with a physical disability other than visual impairment. There are two categories for two different types of bows—the recurve division and the compound division. Each division holds two rounds in which contestants compete to hit the target at 50 meters and at 30 meters, and another 30-meter double round in which contestants shoot twice to hit the target at 30 meters.

Please Use the Mitaka Food and Beverage Guide Map!

A tourist map that introduces food and beverage outlets in Mitaka City has been published to make visiting the area while you enjoy the games more convenient. It is available at the Mitaka Municipal Office, Municipal Office Branches, and the Mitaka City Tourism Association Office.



Learn Disaster Countermeasures through Hands-On Experience

Let's Participate in Comprehensive Disaster Prevention Drills

◇Schedule

Area	Date and Time	Location
Osawa	Sept. 1 (Sun.) 9:00 a.m. to 12 noon	Osawadai Elementary School
Renjaku	Sept. 1 (Sun.) 9:00 to 11:00 a.m.	Minamiura Elementary School
Seibu	Sept. 1 (Sun.) 10:00 a.m. to 12 noon	Dai-ni Junior High School
Shinkawa-Nakahara	Sept. 8 (Sun.) 10:00 to 11:30 a.m.	Shinkawa-Nakahara Community Center, Nakahara Elementary School
Tobu	Oct. 12 (Sat.) 9:30 a.m. to 12:30 p.m.	Mure Community Center, and other locations
Ekimae	Nov. 4 (holiday) 10:00 a.m. to 12 noon	Dai-yon Junior High School (main site)
Inokashira	Nov. 10 (Sun.) 10:00 a.m. to 12:30 p.m.	Inokashira Community Center

◇Main Drill Program (the program varies by area)

First-stage firefighting techniques, evacuation center management, emergency/medical first-aid, evacuation guidance, food and water distribution, and more.

Note: At the main site on November 4, MISHOP will provide volunteer interpreting services. (Subject to change)

Inquiries: Disaster Preparedness Section, Ext. 2284

Now Recruiting Teams for the 22nd Mitaka Citizens Ekiden Relay

The relay will start at 9:00 a.m. on Sunday, November 24, and will be held even in light rain. The course circles Mitaka City (four sections) for a total of 12.5 kilometers.

◆Eligibility/Team Members

Must live, work, or go to school in the City, and be of junior high school age or older. Each team must have a director, four athletes, and up to four substitutes.

◆Divisions/Number of Teams

Men's (high school age or older; includes teams with both males and females): 125 teams

Women's (high school age or older): 30 teams

Senior (50 years of age or older as of the day of the event): 10 teams

Junior high school (boys' and girls' divisions): 30 teams

Fee: ¥5,000 per team (free of charge for junior high school division)

Application: Send a return postcard between September 2 (Mon.) and 20 (Fri.) (must be received without fail) with your name, address, telephone number, names of your team and all members—the director, athletes, and substitutes—and division category to the Sports Promotion Section, 181-8505. If the number of applications exceeds capacity, a lottery will be held.

Note: The application guideline is available at the Sports Promotion Section, Dai-ni Gymnasium, and Mitaka City Amateur Sports Association (at Dai-ichi Gymnasium), and can also be viewed via the Mitaka City website (in Japanese).

Inquiries: Mitaka City Amateur Sports Association, Tel: 0422-43-2500, Sports Promotion Section, Ext. 3325

The 24th Mitaka International Exchange Festival MISHOP WORLD 2013 Let's Join Hands 'Cause We're All One World!

Date and Time: September 22 (Sun.), 10:00 a.m. to 3:30 p.m. **Venue:** Inokashira Onshi West Park

Sponsor: MISHOP **Co-sponsor:** Junior Chamber International Mitaka **Supported by:** Mitaka City

Come and enjoy friendly exchanges beyond national borders. Various international stage performances and tent booths are available at this annual popular festival.

Tent Shop Area: Foods, Folk Arts, and Attractions from around the World!

Enjoy the cuisines and folk arts of various countries in different sections representing each region of the world. There will also be a section full of games and other attractions where you can experience the cultures and customs of countries around the world.

Stage Area: Delivering the Live Sound and Beats of the World

Enjoy performances of dance and music from various countries including Japanese traditional entertainments. Let's have fun watching spectacular dancing and listening to energizing music!

MISHOP Fellowship Area: What Is MISHOP All About?

This area will introduce the activities of MISHOP, such as programs to promote multicultural understanding and international exchange programs. Let's enjoy talking with people from various countries while enjoying teas from countries around the world!

Children's Area: Come One, Children! Around-the-World Bingo Rally

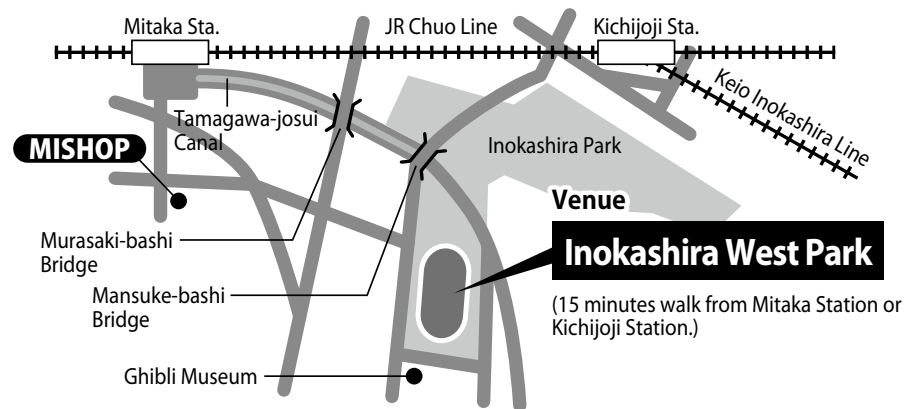
Win a prize by completing a bingo sheet, answering quiz questions in each area. Don't miss the hands-on attractions, either, such as the popular game using parachutes!

Community Fellowship Exchange Area

Shops and attractions will be set up by various community groups.

Disaster and Crime Prevention Area

Visit the earthquake simulation vehicle and a booth where you can experience the smoke of a fire, and so on.



Information



Information about Mitaka International Society for HOspitality

MISHOP Office

Days: Monday through Saturday (Closed on Sundays and national holidays)
Hours: 9:30 a.m. to 5:00 p.m.
Location: Mitaka City Chuo-Dori Town Plaza 4F, 3-30-12, Shimorenjaku 181-0013
Tel: 0422-43-7812 **Fax:** 0422-43-9966
E-mail: mishop@parkcity.ne.jp
URL: <http://www.mishop.jp/>

Established: November 23, 1989

Bring Your Own Dish and Chopsticks and Get a Discount!

Some shops will offer some discounts if you bring your own dish and chopsticks. Please cooperate in garbage reduction efforts.

Mitaka Picture Book House in the Astronomical Observatory Forest Harvest Moon Viewing

Why not enjoy a relaxing time viewing at the full moon? We will make offerings of dumplings and pampas grass according to the traditional Japanese customs of long ago.



Date and Time: September 16 (national holiday), 2:00 to 8:00 p.m. (regular hours: 10:00 a.m. to 5:00 p.m.)

Note: The event after 5:00 p.m. will be canceled if it rains.

Program: Traditional moon-viewing decorations, storytelling about the moon, vending booths by the junior staff, viewing the moon and stars, *matouqin* (horse-head fiddle) performance, and more.

Location: Mitaka Picture Book House in the Astronomical Observatory Forest (inside National Astronomical Observatory of Japan, 2-21-3 Osawa)

To apply: Come to the venue directly.

Inquiries: Mitaka Picture Book House in the Astronomical Observatory Forest, **Tel:** 0422-39-3401

Events of Mitaka City Arts Foundation

Mitaka City Arts Center, Tel: 0422-47-5122

Hours: 10:00 a.m. to 7:00 p.m. **Closed:** September 2, 9, 17, 18, 24, 25, and 30

HP <http://mitaka-art.jp/ticket> (Japanese only)

= A nursery service is available. (Please apply 2 weeks prior to each performance.)

Mitaka City Arts Center Concert Hall "Kaze"

Yukio Yokoyama, Piano Recital Series, Voyage No. 7
70th anniversary of the death of Rachmaninov
An All-Rachmaninov Program with Two Pianos

October 13 (Sun.), from 3:00 p.m.

Tickets are now on sale.

All seats are reserved. Members: ¥4,500; non-members: ¥5,000; students: ¥2,500

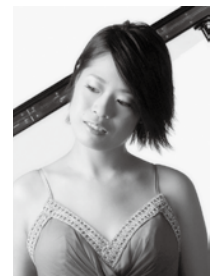
Performed by: Yukio Yokoyama (piano)

Guest artists: Ayako Uehara and others

Program: Rachmaninov's Fantasy (Suite No. 1) for Two Pianos Op. 5, Suite No. 2 for Two Pianos Op. 17, Symphonic Dance Op. 45



Yukio Yokoyama
©Masafumi Nakayama



Ayako Uehara
©EMI CLASSICS

This performance will feature Ayako Uehara, who performs around the world and was the first Japanese to win the International Tchaikovsky Competition. In addition, a promising young pianist is scheduled to appear. Enjoy the rich, strong sound of two pianos, which approaches the sound of a full orchestra.

Mitaka City Arts Center Theater "Hoshi"

Cinema Special—Masterpieces of the Western Film for You
Showings every month until March 2014

October 19 (Sat.)

Matinee and evening shows (audience members may see one show only)
 Matinee show from 11:00 a.m.; evening show from 4:00 p.m.

All seats are reserved.

Members: ¥900; non-members: ¥1,000; students: ¥800

Ticket Sale Date: From September 19 (Thu.) for members, from September 20 (Fri.) for non-members

Les enfants du Paradis (Children of Paradise)

(1945, French, 190 minutes, black and white)

Directed by: Marcel Carné

Starring: Arletty, Jean-Louis Barrault, Pierre Brasseur, etc.



Les enfants du Paradis
©1946 Pathe Cinema-all rights reserved.

This movie is a treasure of art and entertainment born of culture that the twentieth century can be proud of.

Population and Number of Households As of August 1, 2013

Numbers in brackets are changes from previous month.

No. of Registered Residents 180,229 persons (+6)
No. of Households 89,464 households (-49)

Information and Consultation Service in English for Foreign Residents

Date and Time: Every 2nd Friday each month from 1:00 p.m. to 4:00 p.m. (the service at the counter is to be accepted by 3:00 p.m.) Closed on national holidays.

Location: Consultation/Information Center, Mitaka Municipal Office 2F
Tel: 0422-44-6600