

MITAKA CITY NEWS



October 1, 2016 No. 203

Published monthly by:
Mitaka Municipal Office, Tokyo
Edited by:
Secretariat and Public Relations Section
Mitaka Municipal Office
1-1-1, Nozaki, Mitaka, Tokyo 181-8555
Corporate Number: 8000020132047
Phone: 0422-45-1151
URL: <http://www.city.mitaka.tokyo.jp/foreign/english/index.html>
Mitaka City News, providing information on public services, lives and events of Mitaka City, is published on the 1st of every month.

Amazing and Thrilling—Experience the World of Science! Science Kids Festival 2016

The Science Kids Festival 2016 is designed to allow elementary and junior high school children experience science and become interested in while having fun. Five cities—Mitaka, Musashino, Koganei, Kokubunji and Kunitachi—are collaborating on the festival. With “Mitaka—Where You Can Experience Genuine Astronomy” as the concept, many programs will be presented that make viewers feel closer to outer space. Don't let your kids miss this experience!

Date and time: October 15 (Sat.), 10:00 a.m. to 7:00 p.m. **Location:** Mitaka Public Hall “Hikari” and “San San Kan” **Note:** Please refrain from coming to the event by car.

■ Program You Can Join (on a first-come, first-served basis; preschoolers will not be admitted)

◆ Cosmic Front Screening

Cosmic Front ☆ *NEXT*, a broadcast on NHK-BS Premium, will be shown along with helpful explanations by professors of the National Astronomical Observatory of Japan.
Note: Screening only for the last show for both episodes.

• Birth of the First Star

This is a story about astronomers searching for the first star of our universe.
Lecturer: Hidehiko Agata, Associate Professor, National Astronomical Observatory of Japan
Time: From 10:30 a.m.; from 1:30 p.m.; and from 4:30 p.m. (thirty minutes per session)
Capacity: Sixty persons per lecture

• Time Travel

This is a story about a researcher who rose to the challenge of measuring gravitational waves in Mitaka City.
Lecturer: Masakatsu Fujimoto, Honorary Professor, National Astronomical Observatory of Japan
Time: From noon; from 3:00 p.m.; from 5:30 p.m. (thirty minutes per session)
Capacity: Sixty persons per lecture



An inflatable planetarium

◆ Experience a Starry Sky! Inflatable Planetarium

Time: 10:15 a.m. to 5:45 p.m. (starts every hour on the quarter; total of eight shows; thirty minutes per session)
Capacity: Thirty persons per show



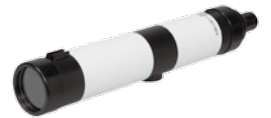
4D2U Theater

◆ Travel to the Edge of Space! 4D2U Theater

Time: 10:30 a.m. to 5:50 p.m. (starts every hour on the half; total of eight shows; twenty minutes per session)
Capacity: Twenty persons per show

◆ Let's Create! Crafts Class

You can make a planisphere or a small telescope.
Time: 10:00 a.m. to 5:30 p.m. (starts every hour on the hour; total of eight classes; thirty minutes per session; numbered tickets will be distributed from 10:00 a.m.)
Capacity: Twenty persons per class **Fee:** ¥1,500 (for small telescopes only)



Assemble-type astronomical telescope

◆ Photo Exhibition: The Moon and Stars of Fukushima

Time: 10:00 a.m. to 6:45 p.m.

Note: For more information, such as concerning other events, please visit the Science Kids Festival Office website (**URL:** <http://kagakukids2016.com/>).

Inquiries: Science Kids Festival Office, **Tel:** 03-5579-9031; Planning Management Section, Mitaka Municipal Office, Ext. 2151

■ Mitaka Solar System Walk Stamp Rally 2016 Until October 23 (Sun.)

By shrinking the entire solar system to 1/1.3 billionth the scale of its actual size and placing the sun at Mitaka Station, we can scatter the celestial bodies to Pluto within the Mitaka City limits. The city's communities are divided into eleven areas corresponding to celestial bodies and you can enjoy walking through the town while collecting stamps at participating shops and facilities (237 locations) in each area. A special comet stamp will appear at Science Kids Festival 2016 for that day only.

Stamp rally maps are available at such locations as Mitaka Network University and the Mitaka City Tourism Association Office. Walk through Mitaka City—the town with an Astronomical Observatory—and experience the range of the solar system.

◆ Collect Stamps and Win Astronomy-Related Goods!

When you meet the designated requirements, such as certain types and numbers of stamps, you can receive an original event prize. You can claim your prize at Mitaka Network University or the Mitaka City Tourism Association Office.
Note: The supply of prizes is limited.

Inquiries: Mitaka Network University, **Tel:** 0422-40-0313
Official website for the event, **URL:** <http://www.taiyokei-walk.jp/> (Japanese only)

About FY2016 Temporary Welfare Benefits and Benefits for Pensioners Receiving Disability Pension/Survivor's Pension

To alleviate the burden in FY2016 caused by the April 2014 consumer tax increase, the city provides the Temporary Welfare Benefit to residents exempt from resident's tax, and the Benefit for Pensioners Receiving Disability Pension/Survivor's Pension to recipients of disability pension or survivor's pension exempt from resident's tax who are not benefitting from a wage increase. Residents who are eligible for both benefits may receive both.

1. FY2016 Temporary Welfare Benefit

◆ Eligibility

Registered residents of Mitaka City as of January 1, 2016 (reference date) who meet all of the following requirements:

- Not taxed for FY2016 resident's tax (per capita rate)
- Not a dependent of someone who paid resident's tax in FY2016 (per capita rate; excluding family employees or recipients of special exemption for spouses)
- Not a recipient of the public assistance or other benefits

◆ Benefit amount

¥3,000 per eligible person (one time only)

◆ Application

Application forms for each benefit have been mailed to the head of the household of any resident who may be eligible. Please submit your completed application form and required documents using the return envelope no later than January 31, 2017 (Tue.; must be postmarked by this date).

Notes:

1. The benefits are scheduled to start from late October (paid to your bank account). Residents who pass away between the reference date and the date of the benefit decision are no longer eligible for the benefit.
2. Please consult the office below if you are living in Mitaka City but are unable to transfer your residence records due to domestic violence or other reasons.

Inquiries:

- ◆ Mitaka City Temporary Welfare Benefits Call Center, **Tel:** 0422-44-3102, weekdays until January 31, 2017, 9:00 a.m. to 5:00 p.m.
- ◆ Mitaka City Temporary Welfare Benefits Inquiry Counter
Municipal Office Bldg. #3 until January 31, 2017; Municipal Office Bldg. #2 4F from February 1 (Wed.) to March 31 (Fri.), 2017 (Weekdays 9:00 a.m. to 5:00 p.m. for both locations.)

2. Benefit for Pensioners Receiving Disability Pension/ Survivor's Pension

◆ Eligibility

Residents who fulfill all the following requirements:

- Eligible for Benefit 1. above
- Received the May 2016 payment of Basic Pension for the Handicapped or Basic Pension for Bereaved Families
- Not a recipient of Benefits for the Elderly

◆ Benefit amount

¥30,000 per eligible person (one time only)

2016 Mitaka Sports Festival

Inquiries: Sports Promotion Section, Ext. 3325

With the theme "Full of Smiles," this festival is packed with fun and energizing programs for everyone who participates, from children to the elderly and even the disabled. Invite your family and friends to come join the fun.

Date and time: October 9 (Sun.), 10:00 a.m. to 3:00 p.m. (the event will be held even if it rains)

Location: Around the Mitaka Municipal Office and Dai-ichi Junior High School

Application: Come to the site directly on the day of the event.

Note: Please bring indoor shoes if you will be joining in the activities in the gymnasiums.

- ◆ **All areas:** Stamp rally and food and beverage vendors
- ◆ **Mitaka City Public Hall, "Hikari" and "San San Kan"; inner garden of the Mitaka City Office:** Opening Ceremony (Minami-Ura Elementary School fife and drum band parade), talk show, AED operation experience, bocchia, stretching class and more
- ◆ **Dai-ichi Gymnasium area:** Goalball, blind soccer, ping pong volleyball, wheelchair (normal and sports type) experience, outdoor experience, horseback riding experience and more
- ◆ **Dai-ni Gymnasium:** Swimming and water games (toddler section available), archery (Japanese and Western) experience and more
- ◆ **Dai-ichi Junior High School:** Kick targets, new sports—such as Kubb, ring toss, ground golf—rugby experience, mini-sports event and more

◇ Support Tour

Supporters will take participants on a tour so that even those who are disabled can feel free to participate in the events and sport activities.

School Entrance Info for Foreign Children Planning to Start Elementary School in FY2017

Inquiries: School Affairs Section (Education Center 1F), Ext. 3234

Eligibility: Children who were born between April 2, 2010 and April 1, 2011, do not have Japanese citizenship, and wish to enroll in a Mitaka municipal elementary school starting April 1, 2017.

Application: Please bring some form of documentation such as your child's residence card to confirm your child's name, birth date, gender and address to the School Affairs Section.

Note: A health checkup will be offered at each elementary school on a designated date between October 19 (Wed.) and November 25 (Fri.). If you want your child to receive this checkup, please apply as soon as possible.

Campaign to Clean Up Bicycles Illegally Parked at Train Stations

"Please Stop Parking Illegally and Looking the Other Way!"

Inquiries: Road and City Traffic Management Section, Ext. 2883

The campaign will be conducted from October 20 (Thu.) through 28 (Fri.) to reinforce the removal of illegally parked bicycles. We need everyone to cooperate to make our town beautiful, and following parking rules and eliminating illegally parked bicycles will be greatly appreciated.

◆ Park Your Bicycles in Bicycle Parking Lots!

Leaving bicycles on the street makes our town less attractive and less safe in the following ways:

- These bicycles make it more difficult and dangerous for pedestrians such as the physically disabled and the elderly to walk along the street.
- Cars cannot pass by safely and smoothly, causing traffic jams.
- These bicycles can obstruct evacuation procedures as well as firefighting and rescue activities of fire engines in a disaster.

◆ Removal of Illegally Parked Bicycles and Motorcycles

Bicycles as well as motorcycles with a capacity under 50 cc that are parked on the sidewalk or streets in prohibited areas of parking bicycles or motorcycles will be removed. These bicycles and motorcycles will be kept at Mitaka Municipal Removed Bicycle Storage Facility (3-3-15 Nakahara, Tel: 0422-44-0012). To reclaim your bicycle or motorcycle, you must pay the removal fee (bicycles: ¥2,500; motorcycles: ¥4,000).

Mitaka-no-Mori Festival 2016 Is Coming!

Inquiries: NPO Mitaka City Tourism Association,
Tel: 0422-40-5525, URL: <http://kanko.mitaka.ne.jp/>

This annual outdoor music festival was started to commemorate the opening of the Ghibli Museum. Popular musicians will perform again this year, giving live shows amid the refreshing greenery of Inokashira Park. There will be market stalls and specialty products on sale from sister cities as well as other municipalities that Mitaka has friendly ties with. Everyone from children to adults will enjoy this event. Enjoy a beautiful autumn day to your heart's content!

Date and time: October 16 (Sun.), 11:00 a.m. to 5:00 p.m. (will be held even in light rain)

Location: Inokashira West Park

Application: Come to the site directly on the day of the event.

Note: For more information, such as which performers are participating, please visit the Mitaka-no-Mori Festival Facebook page (URL: <https://www.facebook.com/mitakamorifes/>).

Events of Mitaka City Sports and Culture Foundation

Mitaka City Art Center, ☎ 0422-47-5122

Hours: 10:00 a.m. to 7:00 p.m.

Closed: October 3, 11, 12, 17, 24 and 31

HP <http://mitaka-art.jp/ticket> (Japanese only)

☎ = A nursery service is available. (Please apply two weeks prior to each performance.)

Mitaka City Arts Center Concert Hall "Kaze"

Freiburger Barockorchester

October 23 (Sun.), from 3:00 p.m. ☎

Tickets now on sale. All seats reserved.

Members: "S" seats: ¥5,400; "A" seats: ¥4,500

Non-members: "S" seats: ¥6,000; "A" seats: ¥5,000

U-23 (those 23 years of age or under): ¥3,500



Freiburger Barockorchester
© Marco Borggreve

Performed by:

Freiburger Barockorchester

Violin soloist and music director: Petra

Müllejons and Gottfried von der Goltz

Program:

J. S. Bach: Violin Concerto No. 1 in A minor BWV1041, Violin Concerto No. 2 in E major BWV1042, and more

This will be the Freiburger Barockorchester's third appearance—renowned as one of the three greatest orchestras of period performance—at Concert Hall "Kaze." Tickets sold out for the past two performances, and the audiences were clearly thrilled. Enjoy Bach's concertos performed by the fifteen-member orchestra, led by Müllejons and von der Goltz!

Mitaka City Arts Center Concert Hall "Kaze"

Les Vents Francais

October 28 (Fri.), from 7:15 p.m. ☎

Tickets now on sale. All seats reserved.

Members: "S" seats: ¥5,400; "A" seats: ¥4,500

Non-members: "S" seats: ¥6,000; "A" seats: ¥5,000

U-23 (those 23 years of age or under): ¥3,500



Les Vents Francais
© Georg Thum, wildundleise.de

Performed by:

Emmanuel Pahud (flute), Francois Leleux

(oboe), Paul Meyer (clarinet), Radovan

Vlatković (horn), Gilbert Audin (bassoon), Eric

Le Sage (piano)

Program:

Beethoven: Trio for Piano, Flute and Bassoon in G major WoO.37

Poulenc: Sextet

and more

Les Vents Francais is a prestigious group of six top soloists who are masters of their respective wind instruments. Enjoy two hours of the essence of a world-class woodwind ensemble to the fullest!



Information

Information about Mitaka International Society for HOspitality

MISHOP Office

Days: Monday through Saturday (Closed on Sundays and national holidays)

Hours: 9:30 a.m. to 5:00 p.m.

Location: Mitaka City Chuo-Dori Town Plaza 4F, 3-30-12, Shimorenjaku 181-0013

Tel: 0422-43-7812 **Fax:** 0422-43-9966

E-mail: mishop@mishop.jp

URL: <http://www.mishop.jp/>

Established: November 23, 1989

Population and Number of Households As of September 1, 2016

Numbers in brackets are changes from previous month.

Number of Registered Residents 185,155 persons (+190)

Number of Households 91,978 households (+61)

